



Moomba Messenger

We empower resilient, creative and successful young people who strive for personal excellence and positively contribute to the world.

We provide an inclusive, supportive and engaging learning environment for our school community in which students are inspired to become resilient lifelong learners.

Upcoming Events & Important Dates

Monday 1st March
Parents & Friends Meeting

Monday 4th, 18th & 25th March
Foundation Tour 2025
9:30am

Monday 11th March
Labour Day Public Holiday

March 13th to 24th
NAPLAN

March 24th - 28th
Ride to School Week

Thursday 28th March
End of term
2:30pm finish

Monday 15th April
Term 2 Begins

Monday 22nd April
Foundation Tour 2025
6:45 pm

Friday 24th May
Photo Day

Thursday 25th April
ANZAC Day
Public Holiday

Dear families,

This morning, our School Captains led assembly for their first time and let me tell you they were impressive! While they were feeling a little nervous, they spoke with clarity and confidence. Unfortunately, their badges haven't arrived, so we will present them at next week's assembly.

Special visitor

This week we had a visit from a previous student Kieffer. Kieffer spent all his primary education at Moomba Park and came by to share the news that he is starting university this year and studying to become a teacher. He brought a long a delicious hamper of goodies to thank our staff for supporting his learning. We are so proud of Kieffer and look forward to hearing more about his career as a teacher in the future.

Parents, Friends, and Carers Group (PFCG)

Our next Parents, Friends and Carers Group meeting will be held on Friday March 1st straight after assembly. If you are interested in attending, please come along on the day. If you can't make it, but would like to receive meeting minutes, please contact the office and we will add you to the mailing list. The group meets a few times each term to organise fundraising events, Mother's and Father's Day stalls and whole school events such as our Family Movie Night in Term 3. The meetings are short and a great way to be involved.

Wet/hot days

When the weather is too hot or too wet at recess and lunch times the students are required to stay in their classrooms. We know how important it is for students to get a break and run around outside with their friends. We do try to minimise keeping them inside, however some days we have no choice. The decision to keep them inside comes down to safety. Are the grounds/playgrounds dry enough for safe play? Is it too hot for them to be out safely? It is not always an easy decision and it is certainly not a popular one!

To combat the bad weather blues, each class yesterday received a tub of games that will keep them happy and entertained on inside days. And boy were they entertained! There were also many opportunities to showcase our school values. Respecting the rules of the game, being responsible for looking after the games and resilience by being a good sport if you lose a game. It was also lovely how many students approached me during the day to thank me for their games tub.

Bad weather days have never been so much fun!



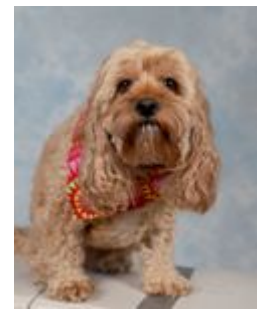
Have a great week everyone,

Ms. Maria Marchionna



Wellbeing with Lisa & Luna

Naplan update



Dear Parents and Guardians,

NAPLAN testing will begin in the middle of March this year for our Year 3 and Year 5 students.

The testing period is Wednesday 13th – Monday 25th March. If your child is unwell, there are days set aside for 'catch – up' testing. The Writing test is the only test that we are unable to do a 'catch-up' test session for. The first test is Writing and can only be completed on the day set, which will be the Wednesday 13th March.

A note has been sent home today for all Year 3 and Year 5 students participating. More information about testing days will follow closer to the testing period.

If you have concerns please contact Lisa.

NAPLAN is a national literacy and numeracy assessment that students in Years 3, 5, 7 and 9 sit each year. It is the only national assessment all Australian students have the opportunity to undertake.

As students progress through their school years, it's important to check how well they are learning the essential skills of reading, writing and numeracy.

NAPLAN assesses the literacy and numeracy skills that students are learning through the school curriculum and allows parents/carers to see how their child is progressing against national standards and over time.

NAPLAN is just one aspect of a school's assessment and reporting process. It doesn't replace ongoing assessments made by teachers about student performance, but it can provide teachers with additional information about students' educational progress.

For more information you can visit this website:

How Can I Help My Child Prepare?



- Anxiety – the test is just one part of the day

- Good night's sleep




- Be on time



- Breakfast *



- Attendance



Student

of the Week

Week 4

Room 1 Ms Laura	Fatimah S	Fatimah, you have made such an impressive start at Moomba Park. You consistently uphold our school values and show great motivation to take on feedback to improve your work. This was very evident when you included the success criteria of using time connectives in your recount. Congratulations!
Room 2 Ms Alice	Blaine	To Blaine, for your excellent effort with your work this week. Seeing how hard you worked to keep your writing on the lines is great. Well done and keep it up!
Room 3 Miss Monica	Arthur	You have this incredible ability to 'read the room' and to know what people need without having to be told. You are thoughtful, helpful and considerate of everyone. You make Room 3 such a great place to be!
Room 6 Ms Hana	Sophia	The determination you have showed to do your best everyday at school is incredible. In just 12 days you have learnt our classroom routines, support others to do them too, and you are beginning to write simple sentences using our 'words of the week'. You are unstoppable!
Room 7 Ms Katie	Cyrus	You have embraced your first three weeks of school with a positive attitude and a love of learning. In Writing, you displayed confidence and motivation when asking for help with your letter formation to improve your work. What a super star. Congratulations Cyrus!
Room 10 Mr John	Rukaiya	Well done Rukaiya on a terrific week! You have shown yourself to be a Responsible learner by always listening to instructions and giving every activity a go to the best of your ability. It is very exciting to see what you'll achieve this year!
Room 11 Mrs Drakopoulos Ms Barr	Tristian	You have had an excellent week of learning and you should be so proud of all the work you have completed. It was wonderful to hear your thoughtful contributions to our Writing session. You came up with some wonderful adjectives to make our sentences more exciting and interesting to read. Keep up the great learning!!!
Room 12 Ms Sarah Miss Croft	Jenna	For taking on feedback about your reading goal and applying it straight away! It was wonderful to see you focus on using the punctuation in the text to help you read fluently. Keep it up!

Student

of the Week

Week 4

Room 14 Miss Kate	Muhammad I	Muhammad your empathy and care this week was on display. I was so proud of the way you connected with our reading texts as well as personal conversations with myself. When you show your manners it sets an example for those around you. Well done on a great week.
Room 15 Miss Nikita	Daim	Well done Daim on an amazing week! You have respectfully contributed to class discussions and have continually shown resilience when working on learning tasks. Keep working hard!
PE Mrs Gerdtz	Mohammed K	Congratulations, on your great start in PE this year. During the session this week you displayed great resilience, leadership and fairness by taking on a responsibility to help others. You were patient and definitely led by example. Keep up this positive & responsible approach to your learning and I'm sure you will have a wonderful year in Grade 6. Well done!

CONGRATULATIONS

STRENGTH SIGNAL AWARD WINNERS

RESPONSIBILITY

IGGY

LEADERSHIP

RAESS
AMIR

REPESECT

SABRINA RM16
KALILA
MYLES
OMAR RM 12
YOUSEF RM 16

SELF-REGULATION

LOLA

TEAMWORK

MYLES
RUKAIYA

MOOMBA PARK PRIMARY SCHOOL



TOURS WELCOME FOR 2025

Please contact the office for a school tour
Ph. 9359 2028

111 Anderson Road, Fawkner 3060
moomba.park.ps@education.vic.gov.au



www.mombaparkps.vic.edu.au